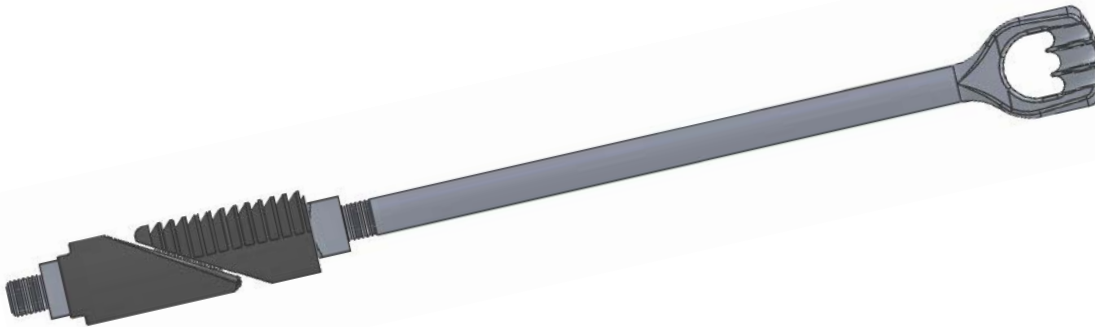


Rock Anchors

MacLean Power System's rock anchors are specifically designed for use in rugged locations where unweathered rock is near grade. Each anchor features a triple eye guy attachment for up to three guy lines per anchor, galvanized anchor rod per ASTM A123 to reduce the chance of corrosion and prolong the life of the anchor, and two wedges coated with a rust inhibitor which are designed to grip and hold firm in unweathered rock. These are available in two diameters, ¾" and 1", with ultimate holding capacities of 23,000 and 36,000 lbs, respectively.

For a standard installation, a core hole is drilled into competent rock (unweathered rock with sufficient strength to adequately resist the anchor load) at the appropriate guy angle, diameter (see table below), and depth so that the wedges extend a minimum of 12" into competent rock. Once the anchor assembly is in place, the anchor rod is rotated to advance the upper rock grip wedge into sufficient contact with competent rock. Installation is complete when the wedge can be driven no further. Finally, the cored hole is backfilled with grout or concrete to limit water and debris from entering the hole and weathering the rock.



Catalog Number	Rod Length (in)	Rod Diameter (in)	Installation Hole Diameter (in)	Weight (lbs)
J3436	15	¾	1-7/8	5
J3437	30			7
J3438	53			10
JR360	60			11
JR372	72			12
JR384	84			13
JR396	96			15
JR130L	30	1	2-3/8	12
JR153L	53			17
JR172L	72			18
JR196L	96			25